

'89 JUL 5 PM 3 50

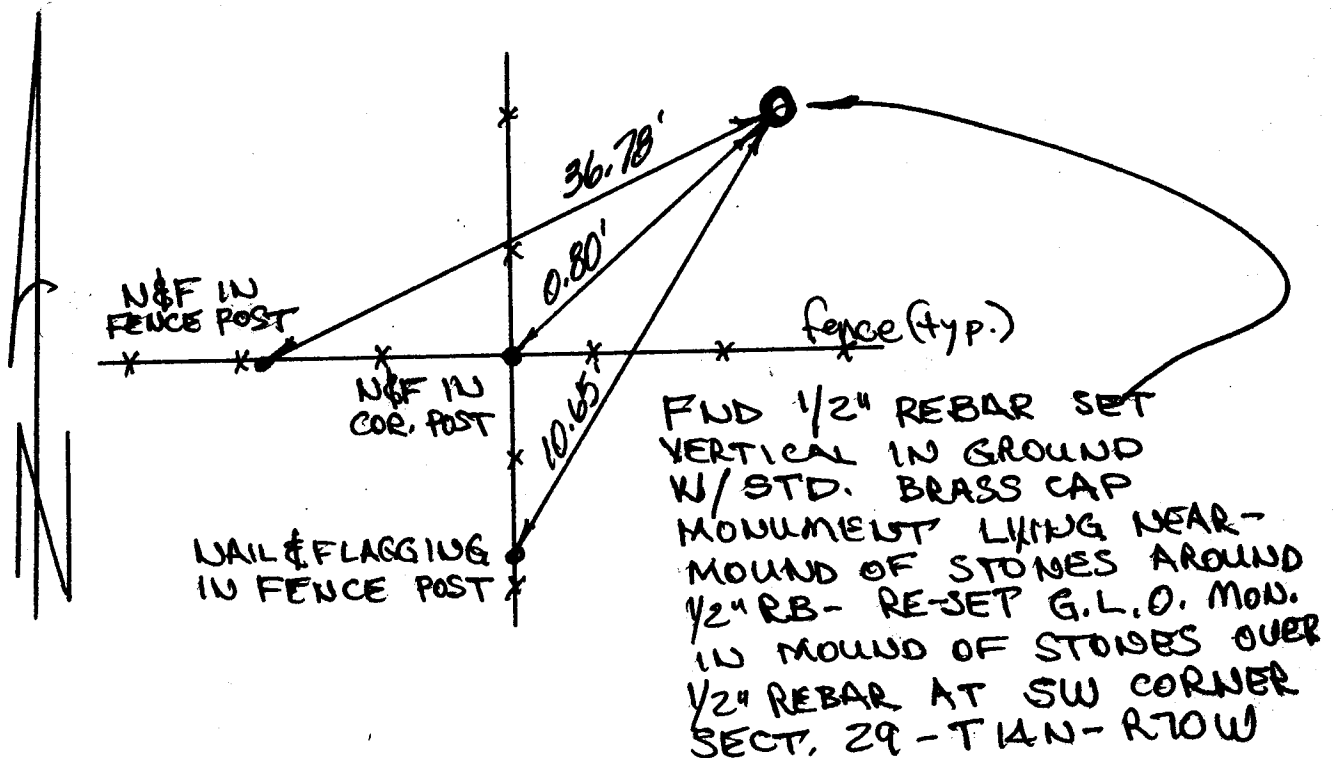
CERTIFIED LAND CORNER RECORDATION

DESCRIPTION OF CORNER EVIDENCE FOUND, AND ORIGINAL RECORD (if known)

Found 1/2" rebar set vertically in the ground near a fence intersection, with a partial mound of stones around the rebar. The remainder of the stone mound had been thrown aside in an unorganized pile and the standard General Land Office brass capped monument was lying nearby. After checking record evidence and comparing the calls of the notes, I determined that the monument had probably been in the location of the 1/2" rebar and therefore placed the G.L.O. monument over the 1/2" rebar and piled the stones around it in the place of the original monument at the Southwest corner of Section 29, Township 14 North, Range 70 West of the 6th P.M.

DESCRIPTION OF MONUMENT AND ACCESSORIES ESTABLISHED
TO PERPETUATE THE ORIGINAL LOCATION OF THIS CORNER:

SKETCH, WITH COURSE AND DISTANCE TO ADJACENT CORNER IF DETERMINED IN THIS SURVEY.
(May Sketch or Paste Reproduction on Reverse Side.)



I, EDWARD L. BERLIER certify that I have carefully performed or reviewed the work done on the diagrammed corner as reported on this recordation form and approve the same.

Signature of Surveyor

Registration No. 2930

STATE OF WYOMING,
Office of Clerk and Recorder,
County of _____

This "corner record" was filed for record on the _____ day of _____, 19____, was noted on the cross-index plat and is assigned page No. _____, in book No. _____

Cross Index No. K-5

County Official

T. 14	R. 70	Mer.
T. _____	R. _____	Mer.
T. _____	R. _____	Mer.
T. _____	R. _____	Mer.
T. _____	R. _____	Mer.
T. _____	R. _____	Mer.
T. _____	R. _____	Mer.